



International Institute for  
Applied Systems Analysis  
[www.iiasa.ac.at](http://www.iiasa.ac.at)

REDD-PAC Kick-off meeting

22-24 May 2012, São José dos Campos, Brazil

science for global insight

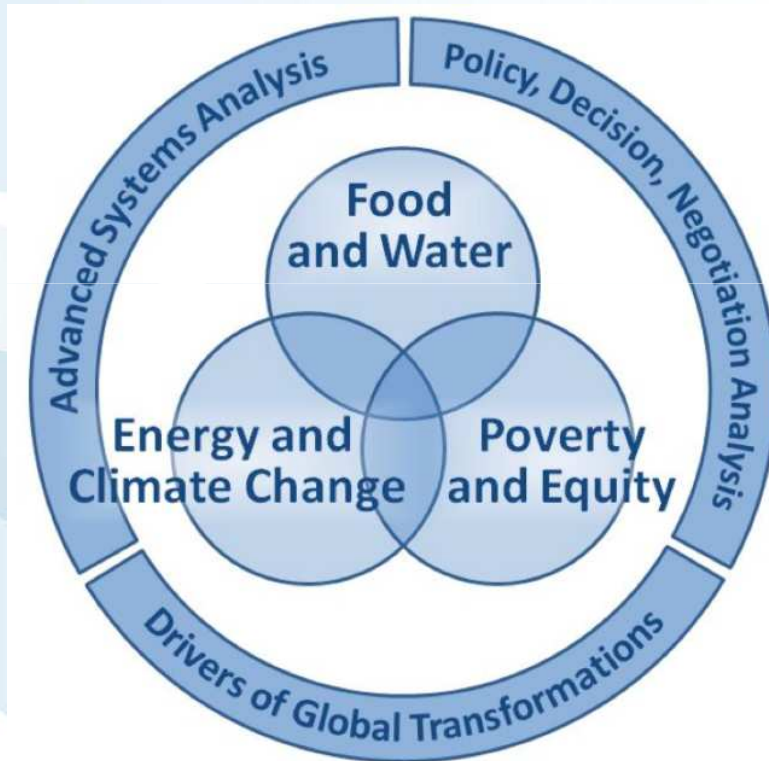
# Overview

Michael Obersteiner and Géraldine Bocquého  
Ecosystems Services and Management Program



IIASA, International Institute for Applied Systems Analysis

# Overview



- ▶ Ecosystems Services & Management Program (ESM)
- ▶ Water Program (WAT)
- ▶ Evolution & Ecology Program (EEP)

# Research Plan: F&W Research Clusters

Climate change

Food, water, and  
agriculture

Fisheries

Ecosystems

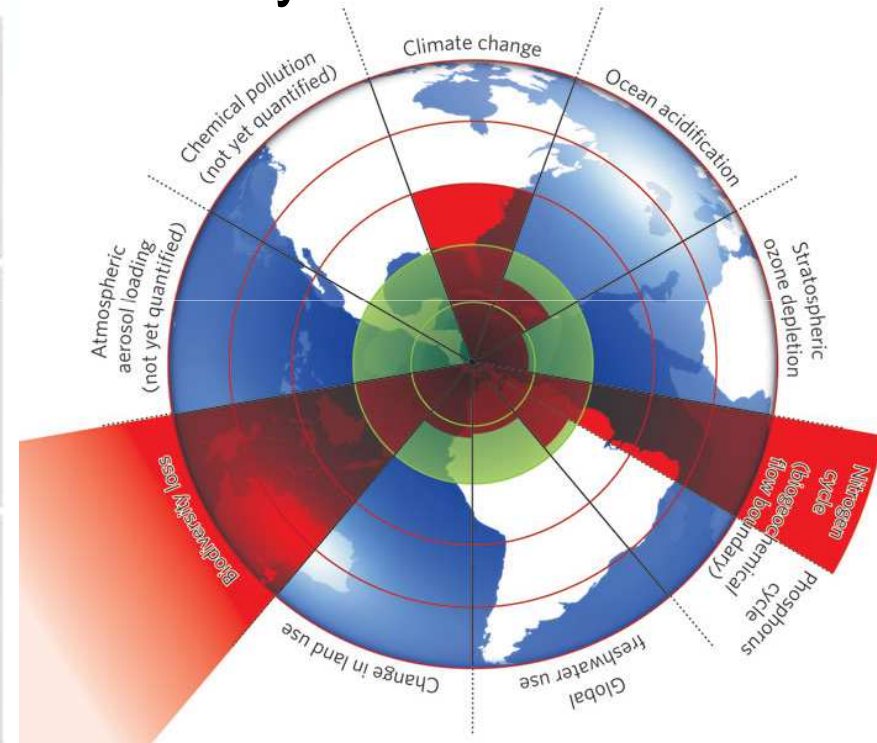
Water

# Global Transformation Drivers

## Societal Benefit Areas



## Planetary Boundaries



Rockström et al, *Nature* **461**, 472-475 (2009)

## Methods of Integrated Modeling

---

# Five ESM Pillars along the new RP

- ▶ Ecosystems Functioning
- ▶ Bio Technologies
- ▶ Economics of Ecosystems Services
- ▶ Land Use Systems
- ▶ Global Earth Observations

# Goals

---

## Goal 1 Avoid “REDD Hot Air”

- ▶ **Target1:** Establish a voluntary mechanism between REDD-PAC countries within two years to ensure transparency, coordination and learning for REDD+ assessment
- a set of tool kits that perform REDD+ impact assessment to be shared internationally and optionally be used domestically for policy planning

# Course of action

---

## Two work packages

- ▶ **WP1: Project coordination and strategy**  
=provide management support and build the REDD-PAC assessment strategy
  - ▶ **WP1.1: Coordination and management**
  - ▶ **WP1.2 : Assessment strategy**
  
- ▶ **WP2: Global, regional and national REDD+/CBD assessment**  
=quantitative global, regional and national REDD+/CBD assessment
  - ▶ **WP2.1: Driver and policy definition**
  - ▶ **WP2.2 : Modeling**
  - ▶ **WP2.3 : Impact assessment**

# Course of action

## WP1: Project coordination and strategy

### WP1.1: Coordination and management (IIASA)

Management team at IIASA: M. Obersteiner, F. Kraxner, G. Bocquého

November 2011



WP	Name	Y1		Y2				Y3				Y4				Y5	
		Q1	Q2	Q3	Q4	Q1	Q2	Q3	Q4	Q1	Q2	Q3	Q4	Q1	Q2		Q3
<b>WP 1</b>	<input type="checkbox"/> <b>Project Coordination and Strategy</b>	[Timeline bar]															
<b>WP 1.1</b>	<input type="checkbox"/> <b>Project Coordination and Management</b>	[Timeline bar]															
T.1.1.1	Day-to-day consortium coordination and project management	[Timeline bar]															
T.1.1.2	Project meetings	[Timeline bar]															
T.1.1.3	REDD-PAC research school	[Timeline bar]															
T.1.1.4	Deliverable tracking and review	[Timeline bar]															
T.1.1.5	Financial management	[Timeline bar]															
T.1.1.6	REDD-PAC website	[Timeline bar]															
T.1.1.7	Dissemination	[Timeline bar]															

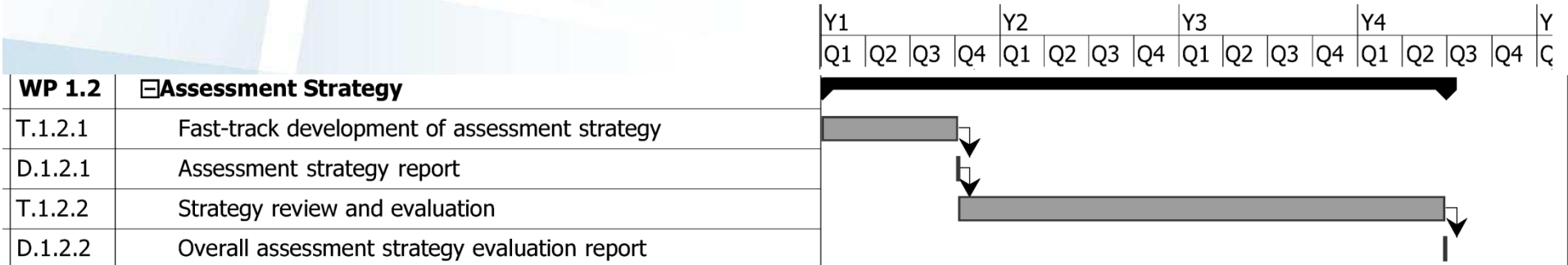


# Course of action

## WP1: Project coordination and strategy

### WP1.2: Assessment strategy (IIASA)

Based on existing tools and identification of gaps





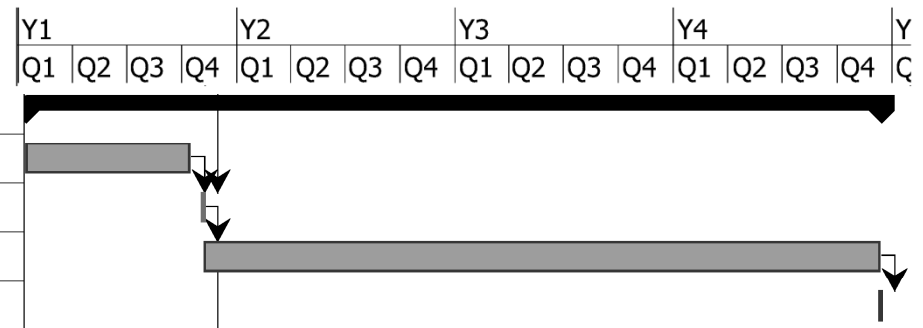
# Course of action

## WP2: Global, regional and national REDD+/CBD assessment

### WP2.2: Modeling (IIASA)

Preparation of input data, model development, and documentation

<b>WP 2.2</b>	<b>REDD+/CBD Modeling</b>
T.2.2.1	Preparation of input data, coding, interfaces
D.2.2.1	Launch of integrated model cluster
T.2.2.2	Operational modelling
D.2.2.2	Technical description of model cluster



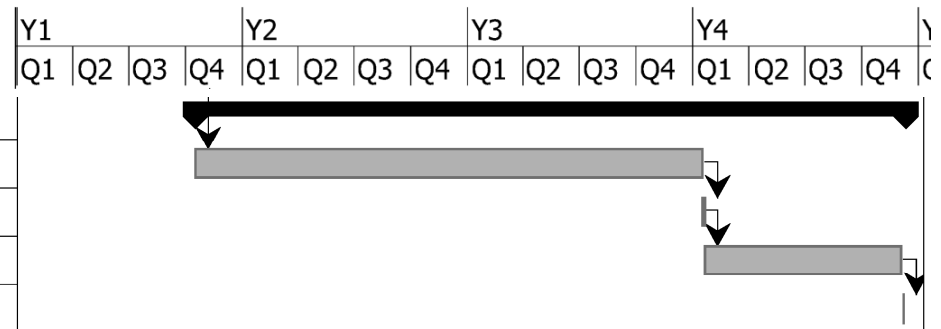
# Course of action

## WP2: Global, regional and national REDD+/CBD assessment

### WP2.3: Impact assessment (partners)

Impact of policy scenarios and policy-relevant conclusions

<b>WP 2.3</b>	<b>Impact Assessment of REDD+/CBD Policies</b>
T.2.3.1	Impact assessment of REDD+/CBD policy options
D.2.3.1	Impact assessment report of REDD+/CBD policies
T.2.3.2	Recommendations for institutional framework building
D.2.3.2	Policy paper on institutional requirements



# Deliverables

---

**11 deliverables, the three first ones were initially due to be submitted by the end of the 1<sup>st</sup> quarter of the 1<sup>st</sup> year (August)**

- ▶ Assessment strategy report (WP1.2)
- ▶ Model-ready driver data description and policy portfolio (WP2.1)
- ▶ Integrated model cluster (WP2.2)

---



Thank you for your attention

Questions...